

**THE MAJESTIC SERIES**

The Majestic

**9585**

**40' x 70'**

DIMENSIONS

**2,761** sf

LIVING SPACE

**3**

BEDROOMS

**2**

BATHROOMS

**OVERVIEW**

The largest Triple Wide Marlette / Clayton Homes makes. Truly a grand design with 3 or optional 4 bedrooms. Master has a full retreat. Fully setup and on display at Heritage in Everett, WA. Call us or swing by and take a look for yourself to see what almost 3,000 square feet of Luxury Manufactured Home looks like.

Heritage Home Center

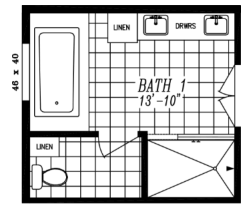
**(425) 353-5464**

or Request Firm Quote

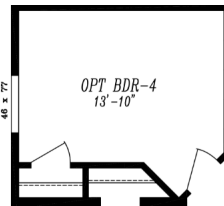
EMAIL US

**01 FLOOR PLAN**

2,761 SQ FT · 40' x 70'



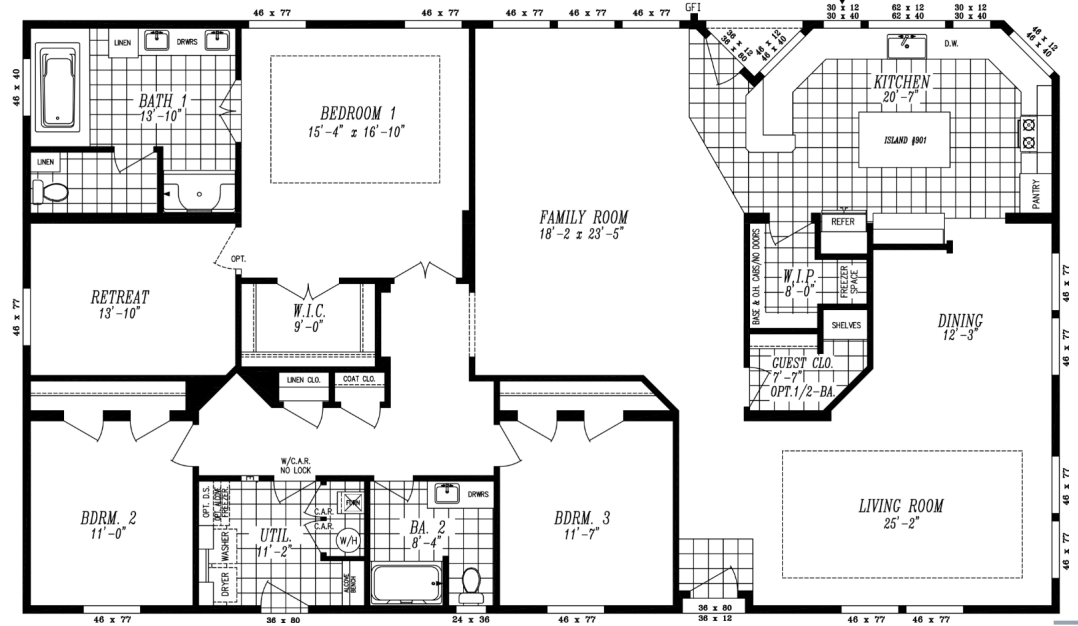
OPT. 48 X 72 SHOWER



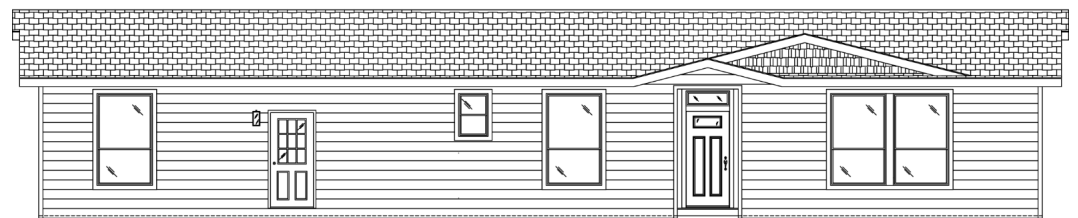
OPT. BEDROOM 4 I.P.O. RETREAT



OPT. 1/2 BATH I.P.O. GUEST CLOSET



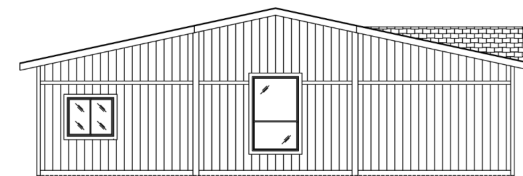
**02 FRONT ELEVATION**



FRONT SIDEWALL



FRONT SIDEWALL



REAR ENDWALL



FRONT ENDWALL

# The Majestic 9585

3 Bedrooms | 2 Bathrooms | 2,761 sq ft

## DELUXE PRIMARY BATH

- ✓ 60" Walk In Shower with Frameless Door
- ✓ Linen Storage
- ✓ Dual Rectangular Sinks
- ✓ 6' Rectangular Soaking Tub

## STANDARD FEATURES

- ✓ Energy Star Rated Home
- ✓ Cement Lap Siding with Structural Sheathing on Front Door Sidewall
- ✓ LP SmartSide Panel Siding on End Walls and Back Door Sidewall
- ✓ Weather Resistant House Wrap Under Siding
- ✓ Recessed Front Entry with Composite Decking
- ✓ Large Dormer with Eyebrow and Shake Accent Area
- ✓ Oversized Eaves and Overhangs
- ✓ Architectural Shingles with Lifetime Warranty (Limited)
- ✓ Sherwin Williams Paint Interior and Exterior
- ✓ Tape and Texture Drywall with Rounded Corners
- ✓ Tray Ceiling in Living Room and Bedroom #1
- ✓ Baseboard Molding Throughout
- ✓ 9' Tall Flat Ceilings
- ✓ Hardwood Cabinets Featuring 42" Tall Overheads
- ✓ 6" Recessed LED Lighting
- ✓ Ceiling Fan Ready in Living Room and Family Room
- ✓ Fiberglass Tubs and Showers
- ✓ Pfister Faucets Throughout
- ✓ Congoleum LUX Vinyl Flooring
- ✓ Shaw 25 ounce Stain Resistant Carpet
- ✓ Kwikset Door Hardware featuring Thumbblatch Front Door
- ✓ Craftsman Style Front Door and 9 Lite Rear Door
- ✓ ecobee Smart Thermostat
- ✓ Carrier SmartComfort Electric Furnace
- ✓ 2"x4" Interior Walls
- ✓ 2"x6" Exterior Walls
- ✓ Farm Apron Sink
- ✓ Laundry Overhead Cabinets with Hanging Rod

## STAINLESS STEEL APPLIANCE PACKAGE

- ✓ Side by Side Energy Star
- ✓ Energy Star Dishwasher

Heritage **Home** Center  
Washington's Price and Volume Leader

**(425) 353-5464**

— CALL TO TOUR

[Request Firm Quote](#)

— EMAIL US

# The Majestic 9585

3 Bedrooms | 2 Bathrooms | 2,761 sq ft

- ✓ Refrigerator with Ice and Water
- ✓ Smooth Top Self-Cleaning Electric Range
- ✓ Above Range Microwave

## MOST POPULAR UPGRADES

- ✓ Full Allura Hardi Plank Siding
- ✓ 4:12 Roof Pitch with 7'6" Sidewalls
- ✓ Shaw 40 ounce Stain Resistant Carpet
- ✓ Prow Porch
- ✓ Clerestory Dormer
- ✓ Highland Exterior
- ✓ 2x8 Floor Joists
- ✓ 31 Cu. Ft. French Door Refrigerator
- ✓ Over the John Cabinet
- ✓ Skylight
- ✓ Electric Fireplace with Mantle
- ✓ Solid Surface Counters

**Heritage Home Center**  
Washington's Price and Volume Leader

**(425) 353-5464**  
— CALL TO TOUR

**[Request Firm Quote](#)**  
— EMAIL US

Features/specs subject to change.

# The Majestic 9585

3 Bedrooms | 2 Bathrooms | 2,761 sq ft

## Photo Gallery



Photo 1



Photo 2



Photo 3



Photo 4

**Heritage Home Center**  
Washington's Price and Volume Leader

**(425) 353-5464**  
— CALL TO TOUR

**[Request Firm Quote](#)**  
— EMAIL US

Features/specs subject to change.

# The Majestic 9585

3 Bedrooms | 2 Bathrooms | 2,761 sq ft



Photo 5

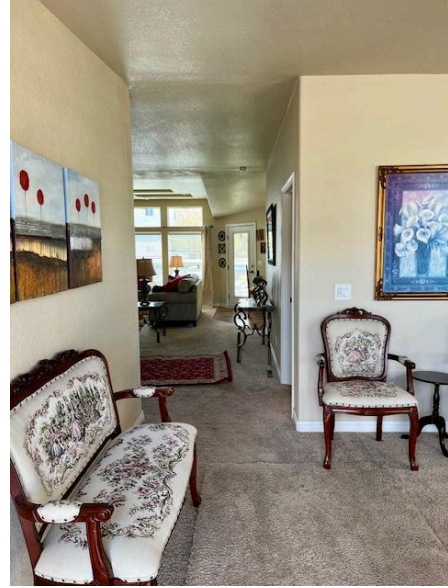


Photo 6

---

**Heritage Home Center**  
Washington's Price and Volume Leader

**(425) 353-5464**  
— CALL TO TOUR

**[Request Firm Quote](#)**  
— EMAIL US

Features/specs subject to change.